

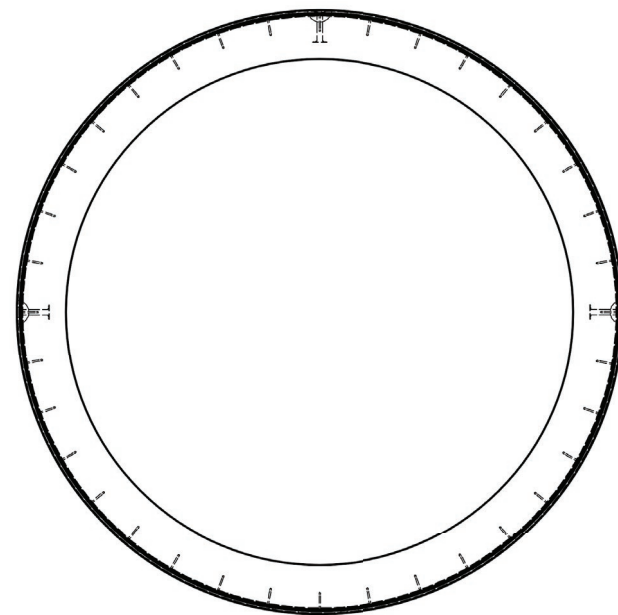
**Plan View**



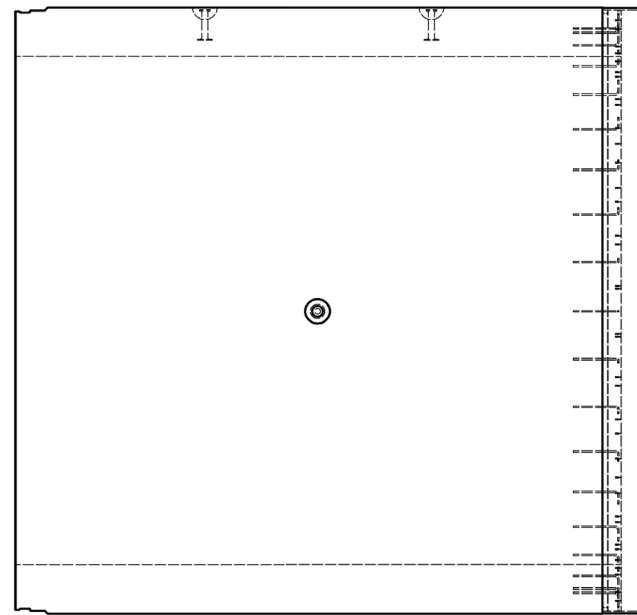
**Isometric 3D**

**Structure Sizes**

#	Size Ø	Length	Class	D-Load
	mm	m		
1	900	3.0	CLV	140D
2	1200	4.0	CLV	140D
3	1200	4.0	CLV	140D
4	1350	4.0	CLV	140D
5	1500	4.0	CLV	140D
6	1650	4.0	CLV	140D
7	1829	4.0	CLV	140D
8	1980	3.0	CLV	140D
9	1980	4.0	CLV	140D
10	2130	4.0	CLV	140D
11	2286	4.0	CLV	140D
12	2500	4.0	CLV	140D
13	2700	3.0	CLV	140D
14	3000	4.0	CLV	140D



**Side Elevation View**



**Front Elevation View**

**Information**

- Available in diameters from 700mm to 2500mm
- Pipe designed to handle jacking forces and deep installations
- Bell end is made from a cast-in, steel tailskin that accommodates a double gasket
- Pipe can be lined with HDPE to protect against corrosive environments