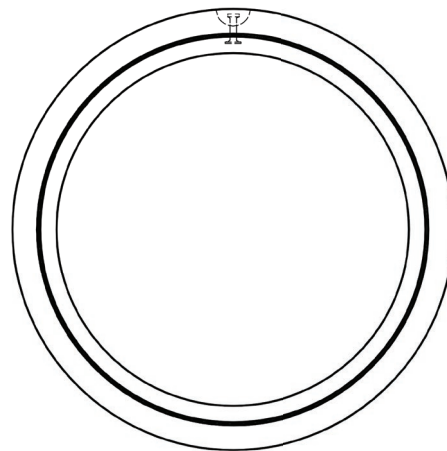


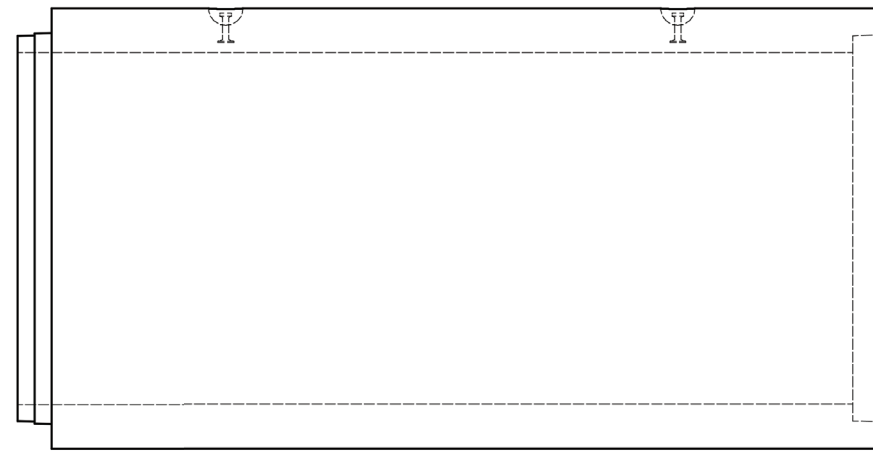
**Plan View**



**Isometric 3D**



**Side Elevation View**



**Front Elevation View**

**Structure Sizes**

#	Size Ø	Pipe ID	Wall Thick	Pipe OD	Length	Class	Wall Type
	mm	mm	mm	mm	m		
1	750	750	107	1156	2.44	CL III	C
2	914	914	121	1454	2.44	CL III	C
3	1200	1200	127	1454	2.50	CL III	B
4	1200	1200	127	1454	2.50	CL IV	B
5	1200	1200	127	1690	2.50	CL V	B
6	1372	1372	159	1690	2.50	CL III	C
7	1372	1372	159	1690	2.50	CL IV	C
8	1372	1372	159	1690	2.50	CL V	C
9	1524	1524	152	1828	2.50	CL III	B
10	1524	1524	152	1828	2.50	CL IV	B
11	1829	1829	178	2185	2.50	CL III	B
12	1829	1829	178	2185	2.50	CL IV	B

**Information**

- Available in diameters from 900mm to 1839mm
- Reinforcing designs from CI III to CI V
- Direct design available